



## A Photo Review of A New Approach to Establishing Aquatic Plants



**Above:** Dark, scale-like mud plantain (*Alisma plantago-aquatica*) seeds are visible in this close-up of dry product (typical approximate size ¼ - ½”).



Mud plantain (*A. plantago-aquatica*) under inundated conditions (**above:** 21 days after SubmerSeed application – leaflets 1-2”; **right:** 35 days after application – leaflets 2-3”).



**Right:** Mud plantain (*A. plantago-aquatica*) seedling (4-5”) grown using SubmerSeed (100 days following product placement).



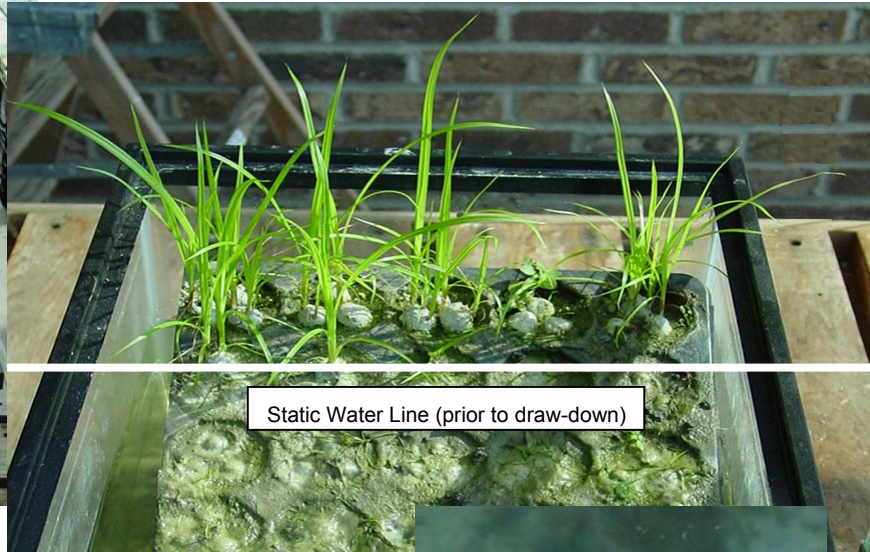
The developmental progression of Common Arrowhead or Duck Potato (*Sagittaria latifolia*) under inundated conditions using SubmerSeed in a controlled greenhouse setting (**above:** 21 days after product inundation; **right:** 57 days; **far right:** 100 days after product inundation).



See reverse . . .



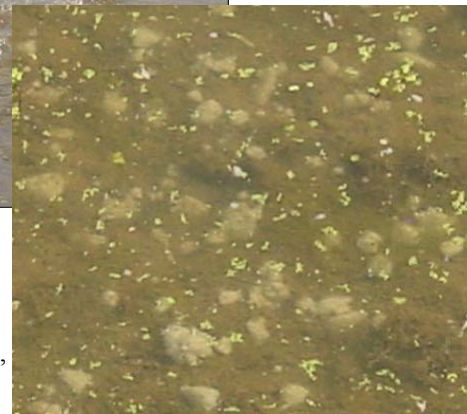
**Left:** Germination and early development greenhouse studies conducted with SubmerSeed to investigate growth preferences of freshwater emergent wetland plant species along a water depth gradient.



Static Water Line (prior to draw-down)

**Above:** Cosmos or Bristly Sedge (*Carex comosa*) sown with SubmerSeed showing a depth preference for saturated (non-inundated) growing conditions.

**Right:** Hard-stemmed Bulrush (*Scirpus acutus*) sown into an inundated environment using SubmerSeed and growing on a substrate of pure AquaBlok®.



For more information, including a list of available species, performance reports, and field pilot studies, please call AquaBlok, Ltd. at (800) 688-2649 or fax us at (419) 385-2990

You can also email us at: [services@aquablokinfo.com](mailto:services@aquablokinfo.com) or visit us at our web site at: [www.aquablokinfo.com](http://www.aquablokinfo.com)

SubmerSeed use generally involves broadcasting dry masses of product through water across the surface of the sediment. It can be applied using commonly available equipment, and in smaller installations, can simply be dispersed by hand. **Right:**

A relatively dense application of inundated product placed on sediment in 2-4" of water (approximate area: one square foot).